



THE ESTATE COMPANY



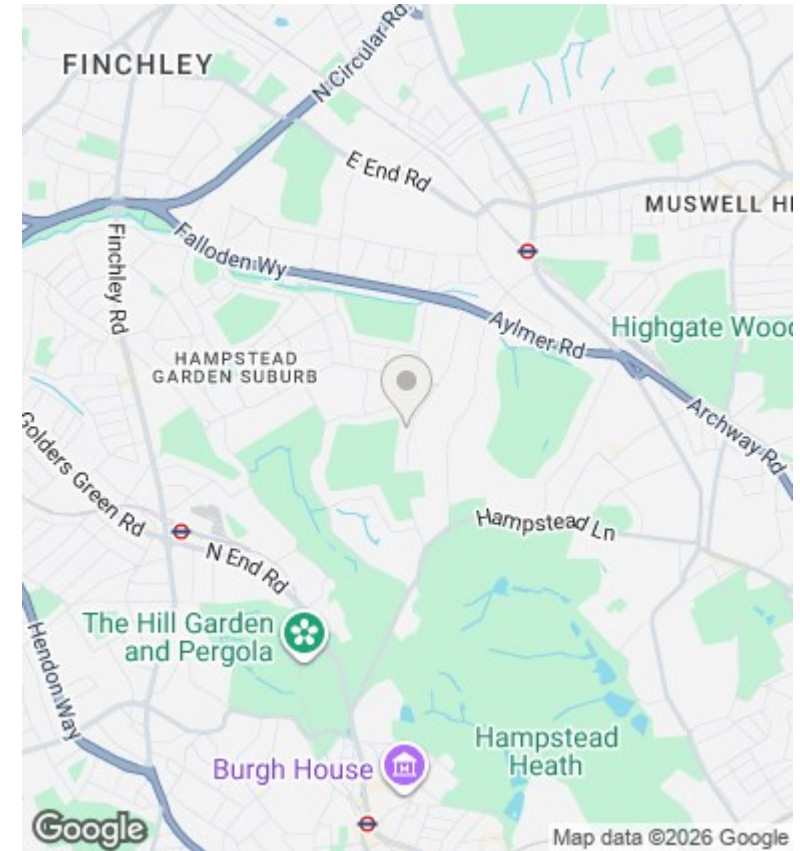
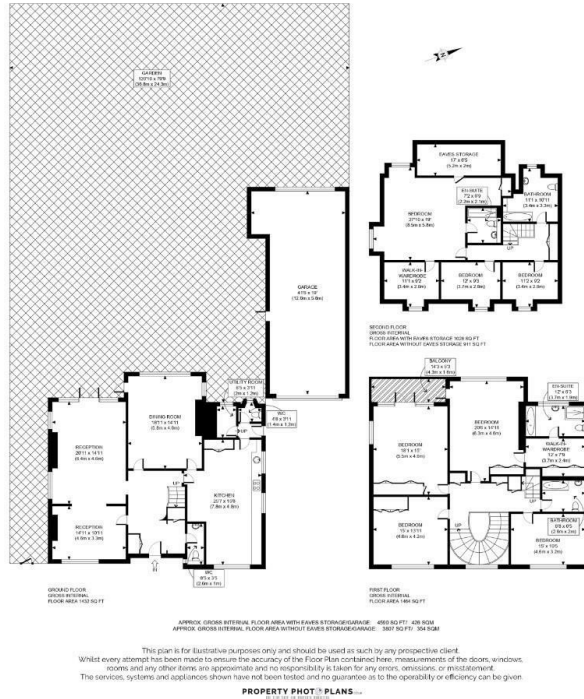
Winnington Road, Hampstead Garden Suburb, London, N2 0TX

£4,000 Per Calendar Month

- 4590 sq ft
- 3 Receptions
- Vast Private Gardens
- Unfurnished
- 7 Bedrooms
- Double Garage
- Excellent Condition Throughout
- 4 Bathrooms
- Off Street Parking
- Balcony

22 Barkat House, 116/118 Finchley Road, London, NW3 5HT
020 7372 5000

enquiries@theestatecompany.com



Directions

Viewings

Viewings by arrangement only. Call 020 7372 5000 to make an appointment.

Council Tax Band

B

EPC Rating:

D

Energy Efficiency Rating		Current	Potential
<i>Very energy efficient - lower running costs</i>			
(92 plus)	A		
(81-91)	B		84
(69-80)	C		
(55-68)	D	57	
(39-54)	E		
(21-38)	F		
(1-20)	G		
<i>Not energy efficient - higher running costs</i>			
England & Wales		EU Directive 2002/91/EC	